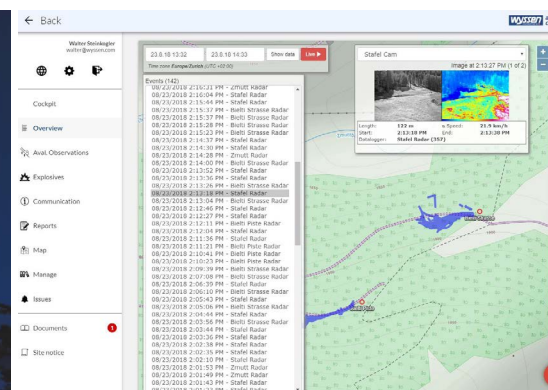




PETRA® People Tracking Radar

To monitor endangered areas in order to make sure no people are exposed to controlled released avalanches if visibility is poor.

Functional principle	The Doppler radar sends out electromagnetic waves which are reflected by objectives. The frequency of reflected radiation of moving objects is different to the one sent out (Doppler Effect). This effect is being used for avalanche detection. The data is sent to a server for processing and visualizing. Run out distance and size of avalanche can be determined within a rough precision.
Set up	The radar installation is installed so that the area to be monitored is within its visibility and range. It can be mounted at a mast or building. Usually an optical or thermal imaging camera are combined in order to be able to determine whether the radar detected a human or animal.
Display	fully integrated in our Wyssen Avalanche Control Center WAC.3®
Range	approx. 300 / 800 / 1'200 m (985 / 2.625 / 3.940 ft), depending on model
Opening angle	90° x 20° / 10°
Communication	Mobile phone network
Power supply	electric grid, solar or fuel cell



Note for registered trademarks ®: Our trademarks are marked with ®. We are happy to provide you with the information, in which countries we have a trademark protection.

Safety through **innovation**

WYSSSEN switzerland **avalanche control**